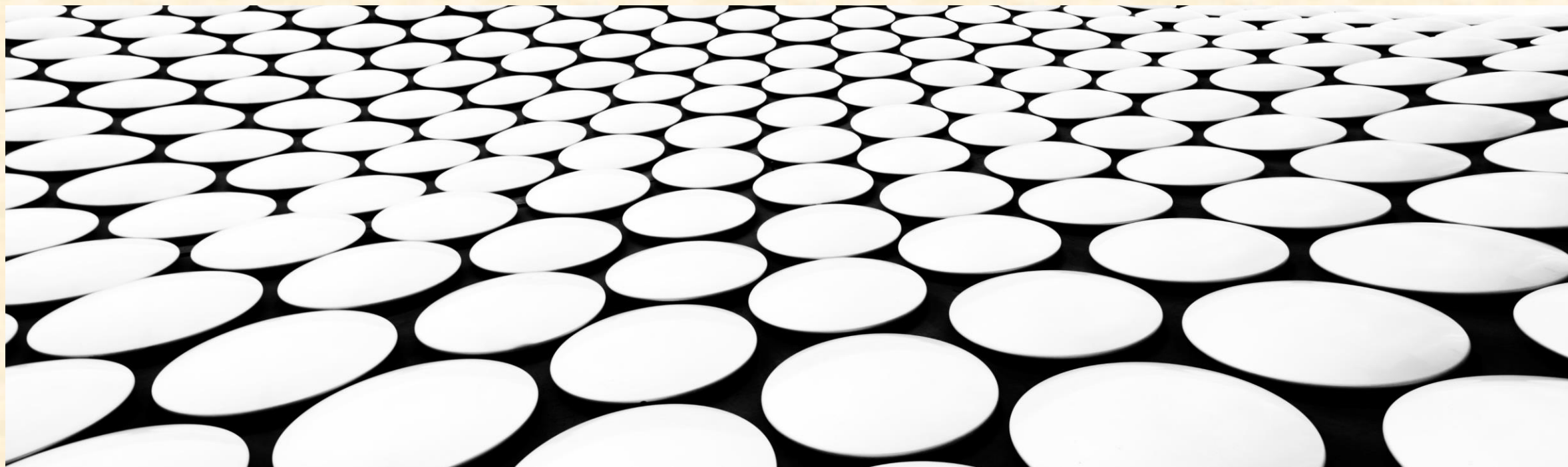


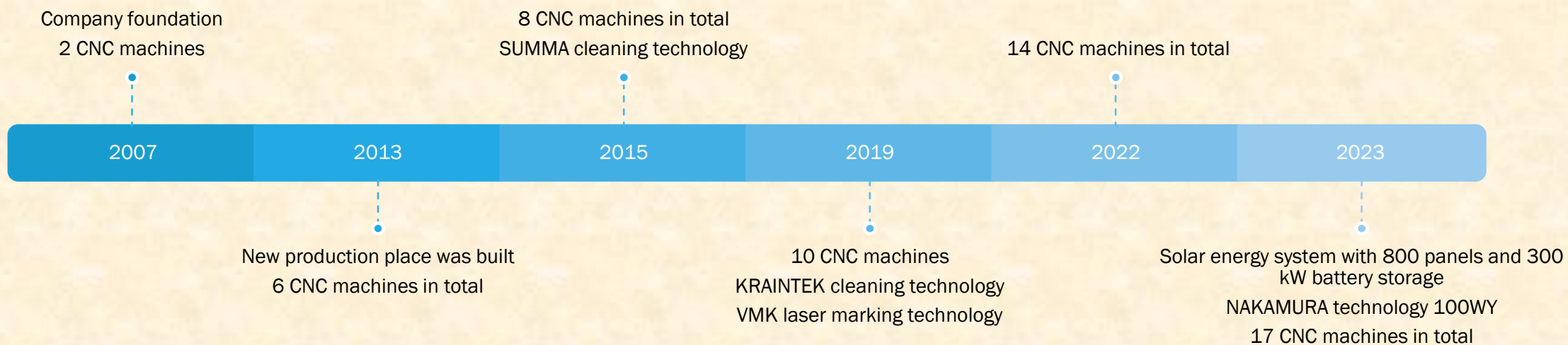


COMPANY PRESENTATION

ŠIMŮNEK, S.R.O.



I. HISTORY



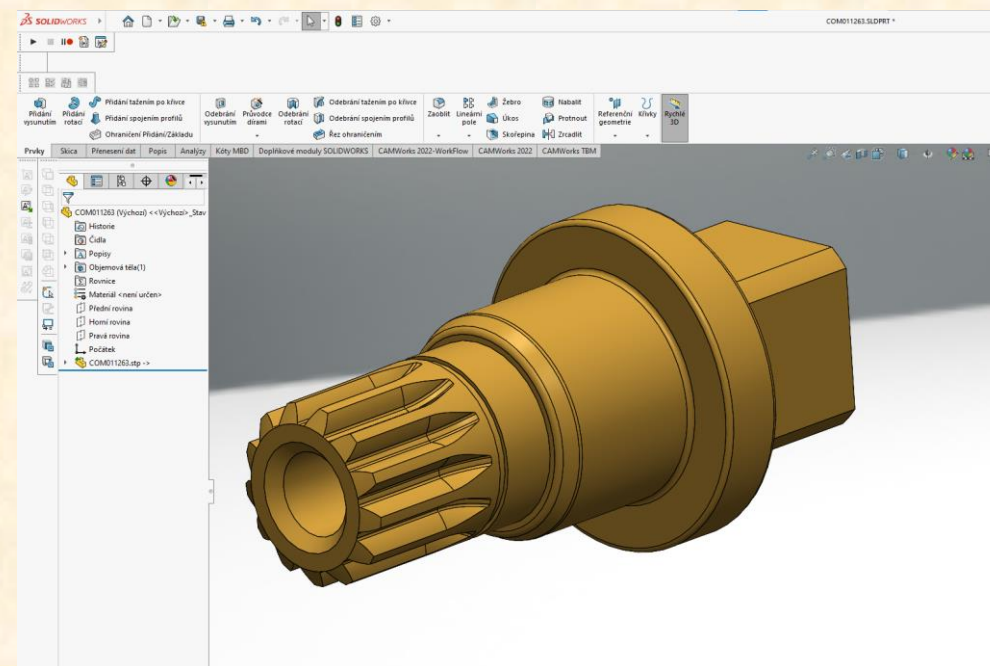
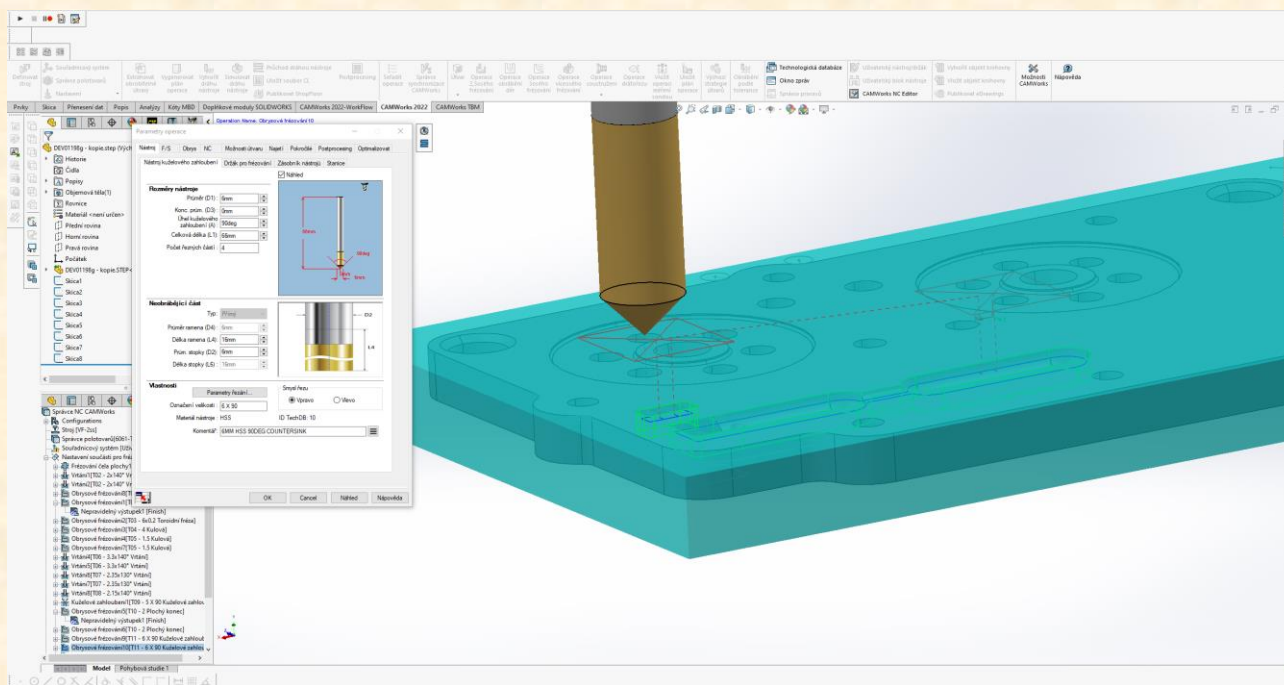
II. WHAT WE OFFER

- Primarily we specialize in small and medium-sized serial production of precision parts according to customer project documentation mostly from steel, stainless steel, brass and aluminium alloys
- We are small dynamic company with possibility of grow in our own place of 4000m², using modern ERP system and production technologies
- Our satisfied customers are OEM companies producing:
 - Gas control equipments
 - Hydraulic systems
 - Industrial valves
 - Pressure vessels
 - Firefighting equipments
 - Tooling systems

III. TECHNOLOGICAL CAPABILITIES

III.1) CAD, CAM software

- We use 3 CAD SOLIDWORKS licences and 2 CAM licences for technological preparation of production



III. TECHNOLOGICAL CAPABILITIES

- **III.2) Turning**
- **III.2.1) Multi - spindle Swiss type machines with feeder for 3m bars**

- **4x JSL 20 CNC machines, maximum turning diameter 20mm**

technical data: <https://www.stcom.cz/cs/prodej-stroju/dlouhotocne-automaty/jsl-20ab>

- **7x JSL 32 CNC 32 machines, maximum turning diameter 32 mm**

technical data: <https://www.stcom.cz/cs/prodej-stroju/dlouhotocne-automaty/26ab-32ab-42ab>

- **2x JSL 42 machines, maximum turning diameter 42 mm**

technical data: <https://www.stcom.cz/cs/prodej-stroju/dlouhotocne-automaty/jsl-42aby>

III. TECHNOLOGICAL CAPABILITIES

III.2.1) Multi - spindle Swiss type machines with feeder for 3m bars



III. TECHNOLOGICAL CAPABILITIES

- **III.2) Turning**
- **III.2.2) CNC lathes with live tools and Y-axis, with feeder for 1m bars**
 - **1x MORI SEIKI NL 2500SY/700,**
maximum turning diameter 356mm,
maximum length 700mm,
maximum rod diameter through the spindle 75 mm
 - **1x MORI SEIKI NL 2500MC/700,**
maximum turning diameter 356mm,
maximum length 700mm,
maximum rod diameter through the spindle 75 mm



III. TECHNOLOGICAL CAPABILITIES

■ III.2) Turning

- III.2.3) CNC lathe with driven tools and Y axis with feeder for 3m bars
 - 1x CNC two turret lathe NAKAMURA WY - 100 II

maximum machining diameter 175 mm,

maximum rod diameter through the spindle 42 mm

technical data:

<https://www.haascnc.com/cs/machines/vertical-mills/vf-series/models/small/vf-2ss.html>



III. TECHNOLOGICAL CAPABILITIES

■ III.4) Milling

- 1 CNC milling machine HAASVF 2 SS

X, Y, Z travels : 762mm, 406mm, 508mm

technical data:

<https://www.haascnc.com/cs/machines/vertical-mills/vf-series/models/small/vf-2ss.html>



III. TECHNOLOGICAL CAPABILITIES

■ III.5) Cleaning technologies

- 1x drum cleaning machine SUMMA 600

technical data:

https://www.summa.cz/wp-content/uploads/2020/03/WIR_4H_cz_ru_en.pdf

- 1x ultrasound cleaning machine KRAINTEK

technical data:

<https://www.kraintek.cz/ultrazvukove-linky-kompaktni-s-otacenim-kosu>



III. TECHNOLOGICAL CAPABILITIES

- **III.6) Marking technology**
 - 1x CNC marking station Laser VMK



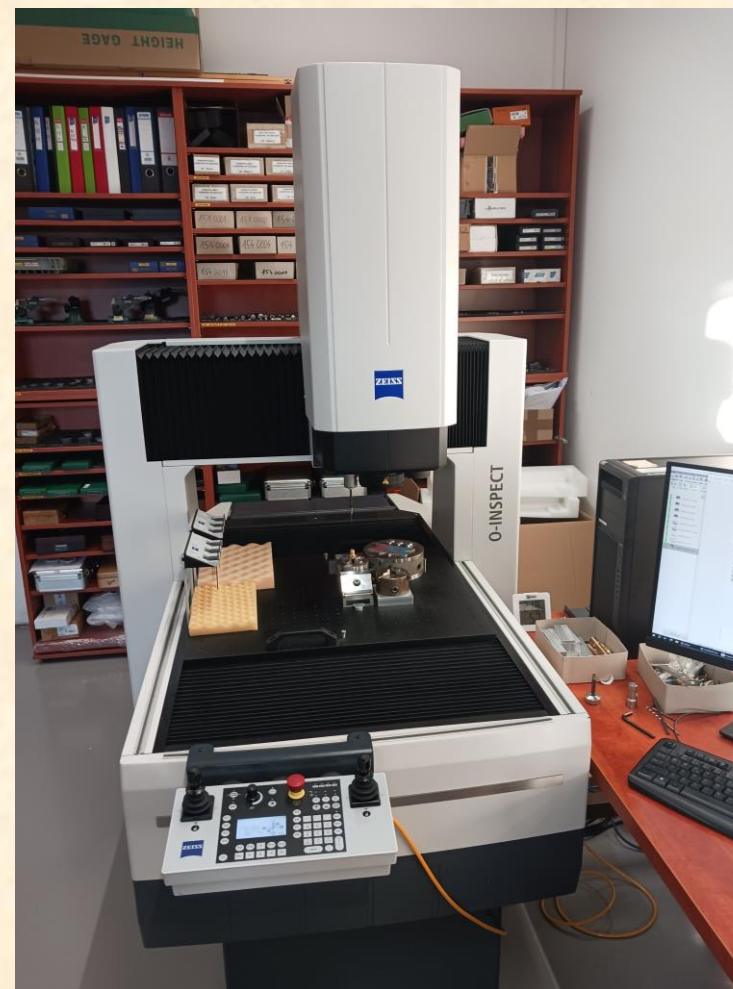
III. TECHNOLOGICAL CAPABILITIES

- **III.7) Assembly**
 - station for small mechanical assembly groups



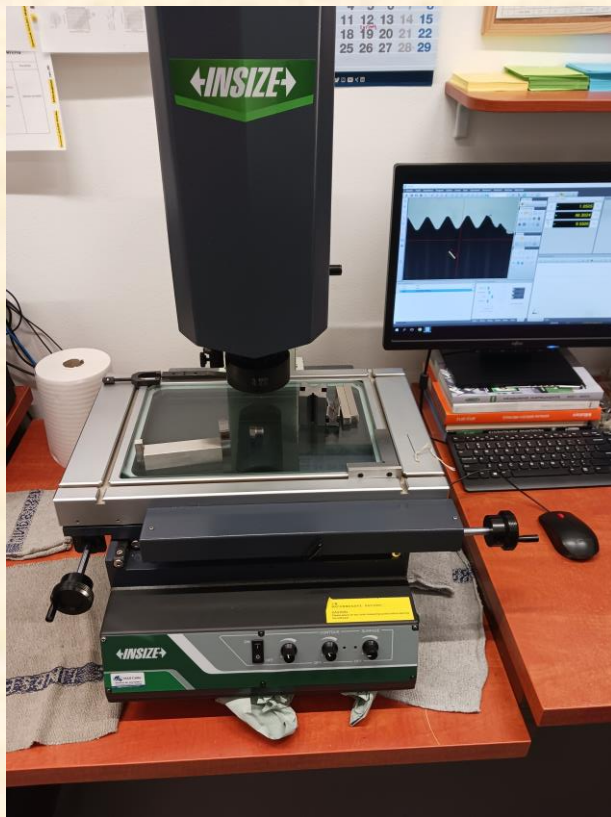
III. TECHNOLOGICAL CAPABILITIES

- **III.8) Control**
 - equipment for final and interoperational control
 - 1x 3D measuring station ZEISS INSPECT
 - 2x optical measuring station INSIZE
 - many different digital and mechanical measuring gauges



III. TECHNOLOGICAL CAPABILITIES

- III.8) Control - photos



III. TECHNOLOGICAL CAPABILITIES

- **III.9) Storage of the parts**
 - suitable space for all parts storage of our customers
 - We deliver just in time in requested amount and package



III. TECHNOLOGICAL CAPABILITIES

- **III.10) Surface threatment, Thermal threatment**
 - We dispose of many agreed suppliers of several surface and thermal threatements requested by our customers

IV. REFERENCES

- **KENDRION**
- **GCE**
- **ARGO – HYTOS**
- **ABNER**
- **ERLINGKLINGER**

V. CERTIFICATES

- We are holdes of ISO 9001:2015 and ISO 14001: 2015 certificates

